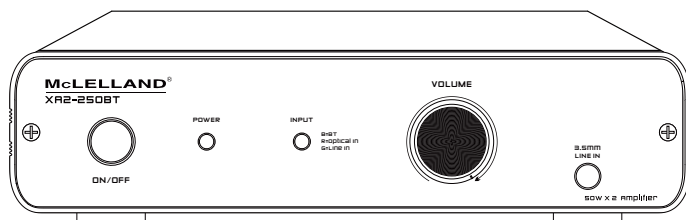


McLELLAND®

XA2-250BT | POWER AMPLIFIER



OWNERS MANUAL

DEAR CUSTOMER

Thank you for purchasing this product. For optimum performance and safety, please read these instructions carefully before connecting, operating or adjusting this product. Please keep this manual for future reference.

WARNING

1. Do not expose this unit to water, moisture, or excessive humidity.
2. Do not install or place this unit in a built-in cabinet, or other confined space without adequate ventilation.
3. To prevent risk of electrical shock or fire hazard, due to overheating do not obstruct unit's ventilation openings.
4. Do not install near any source of heat, including other units that may produce heat.
5. Do not place unit near flames.
6. Only clean unit with a dry cloth.
7. Unplug unit during lightening storms or when not used for an extended period of time. A surge protector is strongly recommended.
8. Protect the power cord from being walked on or pinched, particularly at the plugs.
9. Use unit only with accessories specified by the manufacturer.
10. Refer all servicing to qualified personnel.

CAUTION

CAUTION: TO REDUCE THE RISK OF ELECTRIC SHOCK,
DO NOT REMOVE COVER (OR BACK).
NO USER-SERVICEABLE PARTS INSIDE.
REFER SERVICING TO QUALIFIED SERVICE PERSONNEL.



INTRODUCTION

The McLELLAND **XA2-250BT** amplifier provides clean Class D power with compact and lightweight design. Enough power for most speakers and with RCA Sub Out to an active subwoofer or Sub amplifier. This allows you to create an inexpensive and high-performance 2.1 set up for any office, store, restaurant or small home theater. Just streaming music from any Bluetooth enabled device such as a smartphone, tablet, PC, or MAC to high performance **XA2-250BT** amplifier with built-in Bluetooth 4.2 or playing music from an additional audio source via the RCA or 3.5mm jack. This amplifier is perfect design for many applications with high quality sound.

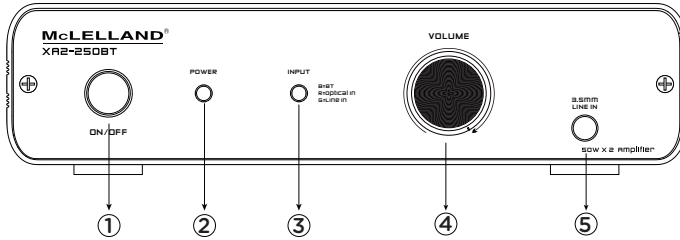
FEATURE

- * Provides 100W Watts Output Power (RMS @ 8 Ω Bridge).
- * Class D circuit designed.
- * Input Priority: Bluetooth -> Optical IN -> 3.5mm Line IN -> RCA Line IN
- * Sub Out to Active Subwoofer
- * Switch Mode Power Supply
- * AC 100-240V IN

SPECIFICATION

Power Output: 25WX2 (RMS @ 8 Ω)
Power Output: 50WX2 (RMS @ 4 Ω)
Total Harmonic Distortion (THD): <1%(Rated power: 50W @ 4 Ω)
Signal to Noise: >92 dB A WTD
Frequency Response: 20Hz-20KHz +0/-2dB@ -3dB
Sub Out Frequency: 100Hz/1V
Line Level Input Sensitivity: 700mV
Channel Separation: 50dB
Bluetooth: 4.2
Protection: Overload , Speaker Short
Dimension: 200mm x125mm x 47.5mm (WxDxH),
Weight: 0.6Kgs

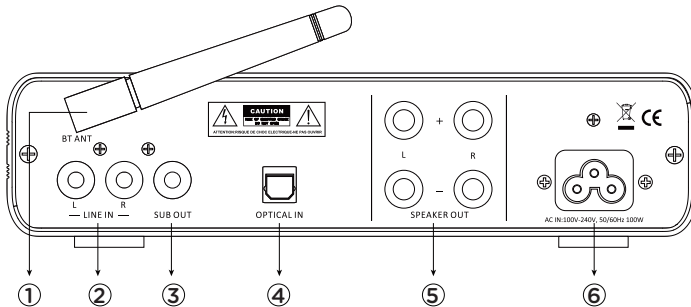
FRONT PANEL



- 1. **Power Switch:** The front panel switch will manually turn the power on or off.
- 2. **Power LED:**
Red: Standby / Protection.
Green: The amplifier in working status.
- 3. **Input Source Indicator:**
Blue: Bluetooth
Red: Optical In
Green: Line In
- 4. **Volume:** Adjust the output level.

- 5. **Line In:** 3.5mm Audio input jack, accepts the audio signal from smartphone, tablet, MP3 player or other device.
NOTE: When audio device is plugged into this 3.5mm input jack, the RCA input jacks on rear panel are disconnected.
- NOTE: For Bluetooth pairing, turn on the amplifier, and ensure your device has Bluetooth enabled. Connect the device to amplifier directly and begin audio playback in your device.

REAR PANEL



- 1. **Antenna:** For a wireless Bluetooth connection.
- 2. **RCA inputs:** For connecting to audio devices equipped with analog output.
- 3. **Sub Out:** For connecting to a subwoofer amplifier or active subwoofer speaker.

- 4. **Optical In:** For connecting to audio devices equipped with digital optical output.
- 5. **Speaker Output:** For connection to speakers.
- 6. **AC Power In:** For connecting the power cord.

CONNECTION DIAGRAM

